

2013-2014 Toledo Public Library Annual Survey

Your Librarians

Jennifer Bledsoe—Director
Sheri McFate—Assistant Librarian
Amanda Campbell—Library Assistant
Jenny Rosario—Library Assistant



Income

\$85,809 General Fund
\$7,542 County Funds
\$3,539 Direct State Aid
\$4,004 Fines and Fees
\$8,750.00 Grants Awarded

Expenses

\$74,505 All Staff & Custodian Wages
\$6,728 All Print, DVD and Magazines
\$1,510 Audio Books and eBook database
\$500 Staff Training
\$3,300 Operating Supplies
\$11,480 All Operating Expenses

DATABASES

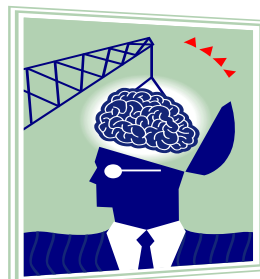
EBSCOhost
Tumblebooks for kids
NEIBORS audio and eBooks
Learning Library Express
Ancestry Library Edition

The facts..

Adult Items	7,247
Youth Items	497
Children's Items	8,310
Movie Items	4,966
Audio Items	887
Magazines	1,459
Ebooks	887
Other Items	402
Total circulation	24,655

Toledo Circulation	13,359
County circulation	4,518
Open Access circulation	4,329
Digital & Other	2,439

Total Holdings	17,826
Total Patrons	3,454
Total Computer users	4,214
Total library visits	25,820
Meeting Room Use	61
Children's Programs	99
Total Attendance	1,273
YA & Adult Programs	17
Total Attendance	128
Volunteers	119
Volunteer Hours	302



“Knowledge is free at the library- Just bring your own container”

Unknown Author

CONTACT US tpl@toledo.lib.ia.us 641-484-3362

www.toledo.lib.ia.us

