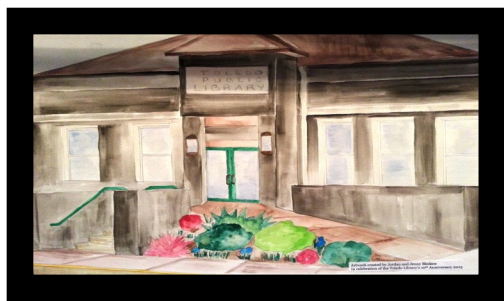


2016-2017 Toledo Public Library Annual Survey



Library Staff

Jennifer Bledsoe	Director
Sheri McFate	Assistant Director
Deb Kern	Library Assistant
Francine YoungBear	Library Assistant
Jess Pushetonequa	Custodian

Revenue

\$104,218.00	City Funds =
\$ 44.51	Per Capita
\$ 8,164.00	County Funds =
\$ 9.11	Per Capita
\$ 2,923.00	Direct State Aid
\$ 3,629.00	Fines and Fees
\$ 948.00	Donations & Gifts
\$ 3,250.00	Grants Awarded

Expenses

\$ 81,253.00	Salary & Wages
\$ 500.00	Training
\$ 7,539.00	All Print
\$ 900.00	DVD
\$ 2,105.00	Audio & e-Books
\$ 465.00	Databases
\$ 24,369.00	Operating Expenses

DATABASES

GALE & Credo Reference	\$165
Tumblebooks for kids	\$300
BRIDGES Digital Audio and e-Book	\$605
Learning Library Express	N/C
Ancestry Library Edition	\$1420

Items Circulated

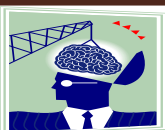
Adult Items	5,835
Youth Items	302
Children's Items	6,945
Movie Items	3,559
Audio Items	698
Magazines	836
Digital eBooks	437
Digital audio Books	821
Other Items	244
Total circulation	19,677

Circulation by Location

Toledo Circulation	9,964
County circulation	3,353
Open Access circulation	4,403
Digital - Toledo & Tama County	1,258
Other	402

Other Annual Stats

Total Registered Patrons	4,140
Patrons Added FY 16	235
Total Computer users	2542
Computer Hours	1563
Children's Computer Sessions	2776
Total library visits	26,004
Meeting Room Use	112
Volunteers	105
Volunteer Hours	179
Total Library Programs	191
Total Attendance	1,865



"Knowledge is free at the library- Just bring your own container"



www.toledo.lib.ia.us